



Gerry Brushett

1) The inspection cover to a 1000 gal. septic tank was opened on Aug. 29th, 1995. As you can see there was a build-up of scum on the top of the tank. Using a spade it was discovered that the 'blanket' was hard and 10" - 12" (25-30 cm) thick! The scum blanket was broken up and treated with Bio-Clean, the revolutionary product for drains and septics.

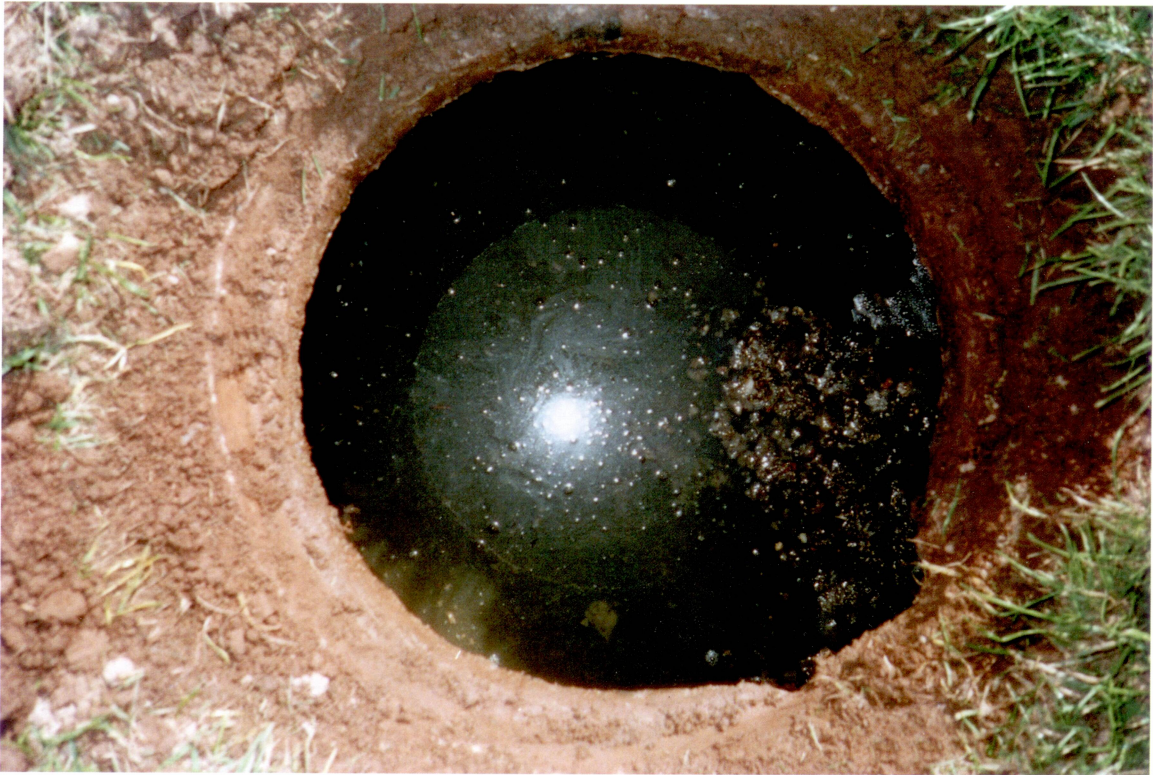


Gerry Brushett

2) The tank was reopened 25 days later. Most of the build-up is gone and you can now see a large percentage of water. Since some solids remained the tank was again treated with Bio-Clean.

How Bio-Clean® Devoured 10 Inches Of Solid Septic Scum

Over →



Gerry Brushett

3) This photo was taken after just one month. Look! 10" - 12" of solids have been devoured by Bio-Clean's powerful biological action. The professional septic pumper monitoring this demonstration could hardly believe his eyes.



Gerry Brushett

4) This shot was taken the same day as #3. To show that the visible scum was merely soft, recent waste, the tank was gently stirred with a spade. The floating matter broke up easily **leaving nothing but water!** Obviously if Bio-Clean works in extreme cases like this, it will work great in YOUR drains and tanks, too. Get Bio-Clean today!

Notice To Consumers: **Nothing** is more effective for biodegrading waste in septic systems than Bio-Clean. But no product can fix mechanical problems. We recommend Bio-Clean as part of a program of preventive maintenance which includes regular inspection of the tank, baffles, solids level and the proper use of water and drainage systems.

Your Bio-Clean Plumbing Professional is: